



Take Control of Your PV Journey With BESREMi

Find out how to get started on BESREMi, a preferred option to treat your polycythemia vera (PV).



Read this Important Safety Information carefully. It explains the serious risks of BESREMi and how to take it safely. Talk to your healthcare provider if you have any questions.

What is the most important information I should know about BESREMi?

BESREMi can cause serious side effects, including conditions that may cause death or may worsen certain serious diseases you may already have. If symptoms get worse, or become severe and continue, your healthcare provider may tell you to stop taking BESREMi permanently. These symptoms may go away in some people after they stop taking BESREMi.

Please see additional Important Safety Information throughout and full [Prescribing Information](#), including Boxed Warning and [Medication Guide](#).



What is PV?

Polycythemia vera (pol-e-sy-THEE-me-uh VEER-uh) is a rare and chronic blood cancer. It's part of a group of blood cancers called myeloproliferative neoplasms (my-e-lo-pro-lif-er-a-tive neo-plasms), or MPNs.

Stem cells in the **bone marrow** make all the **blood cells** in your body: **red blood cells**, **white blood cells**, and **platelets**. Your body needs a certain amount of each of these. Normally, your body keeps everything in balance.

PV occurs when a single stem cell in the bone marrow develops a mutation (or DNA change) and starts to make too many blood cells. This DNA change often happens in a gene called **JAK2**, which helps make a protein that controls how blood cells grow and divide. Most people with PV have a **JAK2 mutation**.

It all starts in the bone marrow



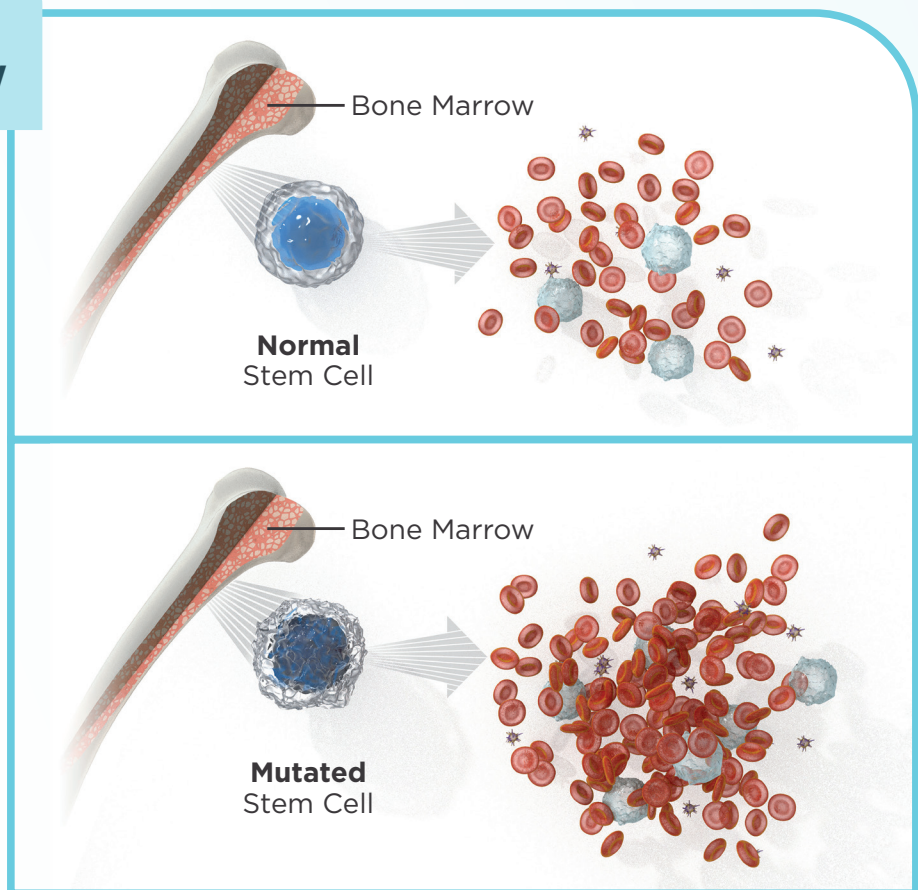
Red Blood Cell



White Blood Cell



Platelet



See a **bolded term** you don't recognize? Click it to jump to the glossary at the back of this brochure.

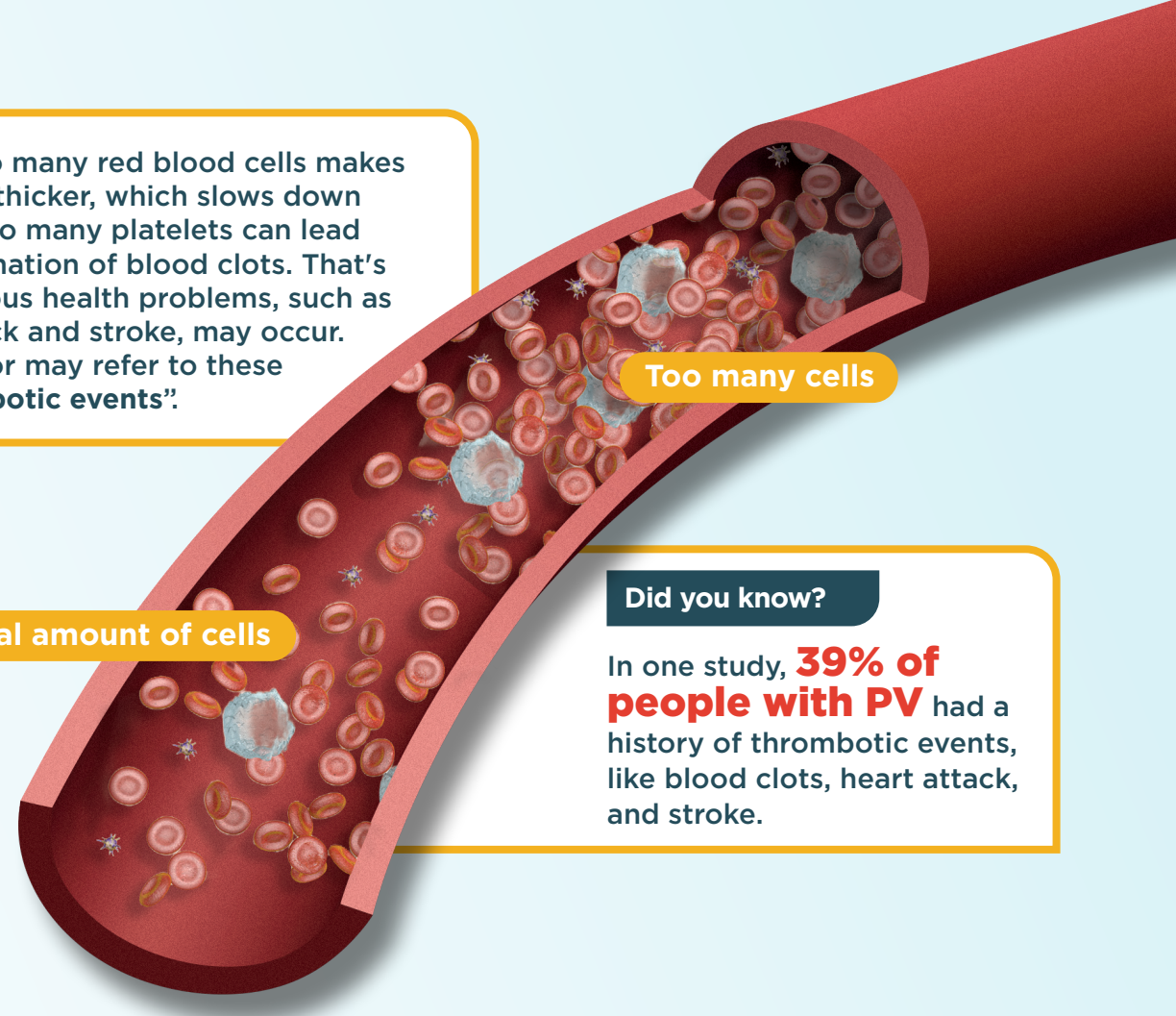
Treating PV for the long term

If you're living with PV, keeping your red and white blood cell and platelet counts under control is very important.

To see the big picture of PV and track how well your treatment is working, your doctor can measure your **complete hematologic response** (CHR). CHR considers:

- Red blood cell count
- White blood cell count
- Platelet count
- Time since last **phlebotomy** (fluh-bot-uh-mee)

Your doctor may also look at your spleen size and whether you have had any **thromboembolic events**. Together with CHR, these measurements can show if you are experiencing **comprehensive disease control**.



Having too many red blood cells makes the blood thicker, which slows down its flow. Too many platelets can lead to the formation of blood clots. That's when serious health problems, such as heart attack and stroke, may occur. Your doctor may refer to these as "thrombotic events".

Normal amount of cells

Too many cells

Did you know?

In one study, **39% of people with PV** had a history of thrombotic events, like blood clots, heart attack, and stroke.

BESREMi targets PV at the source of the disease

BESREMi (bez-REH-me) is different from many other therapies for PV—it addresses the cause of PV.

- BESREMi is the only FDA-approved treatment indicated for adults with PV that targets the bone marrow, helping to control blood cell counts
- BESREMi is not **chemotherapy**, it's an innovative **immunotherapy**. This immunotherapy is a long-acting **interferon** that uses certain parts of the body's immune system to fight disease

Ropeginterferon alfa-2b-njft (BESREMi) is a recommended treatment for certain patients with PV¹

The National Comprehensive Cancer Network[®] (NCCN[®]) is a not-for-profit alliance of 33 leading cancer centers devoted to patient care, research, and education. The alliance creates national guidelines for recommended cancer treatment, called the NCCN Clinical Practice Guidelines in Oncology (NCCN Guidelines[®]).

These guidelines recommend ropeginterferon alfa-2b-njft (BESREMi) as a preferred first-line cytoreductive treatment option for certain patients with PV.¹

IMPORTANT SAFETY INFORMATION (continued)

Mental health problems, including suicide

BESREMi may cause mood or behavior problems that can get worse during treatment or after your last dose, including:

- Irritability (getting upset easily)
- Restlessness and agitation
- Confusion
- Depression (feeling low, hopeless, or bad about yourself)
- Unusually grand ideas
- Acting aggressive or impulsively
- Thoughts of hurting yourself or others, or thoughts of suicide

If you develop any of these symptoms, call your healthcare provider immediately.

New or worsening autoimmune problems

BESREMi may cause your immune system to attack healthy cells, leading to conditions such as thyroid disease, increased blood sugar (hyperglycemia), or type 1 diabetes. Call your healthcare provider if you experience:

- Extreme tiredness
- Frequent urination
- Excessive thirst

Please see additional Important Safety Information throughout and full [Prescribing Information](#), including [Boxed Warning](#) and [Medication Guide](#).

BESREMi helped a broad range of people with PV

A clinical study of BESREMi in adults diagnosed with PV looked at **efficacy** (how much it helped), dosing, and safety.

Patients were included regardless of:

- History of **cardiovascular events**
- Prior treatment with **hydroxyurea** (HU), a type of chemotherapy

Of the people who used BESREMi in the clinical study:

- All were 35 to 82 years of age
- 33% had been treated with HU
- 22% had a previous thrombotic event

BESREMi displayed PV control over the long term

Complete hematologic response (CHR) was observed **over a 7.5-year clinical trial.**

IMPORTANT SAFETY INFORMATION (continued)

Heart problems

BESREMi may cause heart problems, including:

- Cardiomyopathy (heart muscle disease)
- Heart attack
- Irregular heartbeat (atrial fibrillation)
- Decreased blood flow to the heart

You should not take BESREMi if you have:

- Uncontrolled high blood pressure
- Congestive heart failure
- A serious abnormal heart rhythm
- Narrowing of the arteries to your heart
- Certain types of chest pain (angina)
- A recent stroke or heart attack

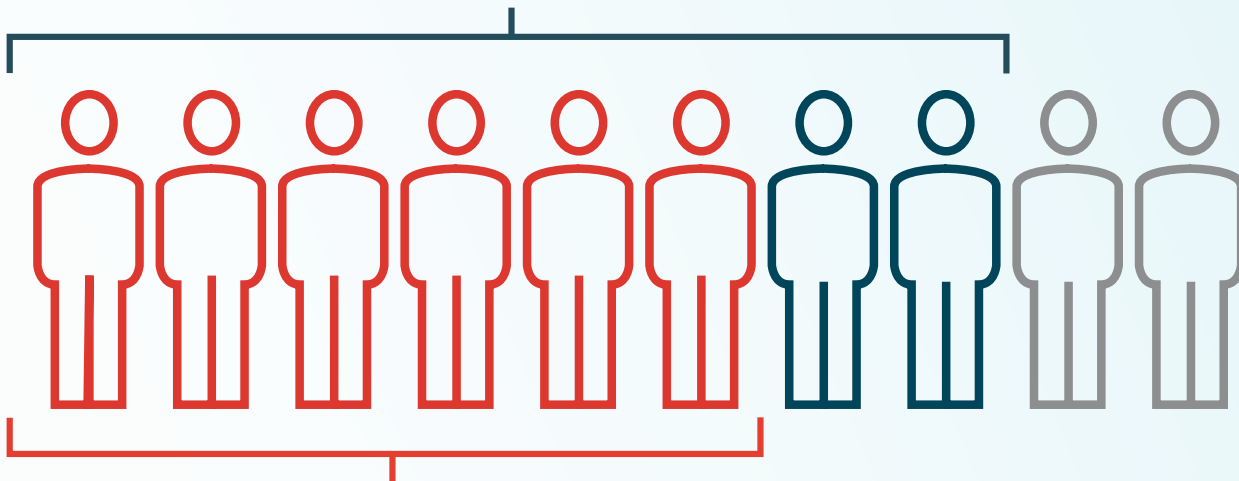
Please see additional Important Safety Information throughout and full [Prescribing Information](#), including [Boxed Warning](#) and [Medication Guide](#).



BESREMi showed meaningful outcomes

8 out of 10 achieved complete hematologic response (CHR)

- Blood cell counts (red, white, and platelets) returned to a normal level
- No phlebotomy in the past 2 months



6 out of 10 achieved comprehensive disease control

- Blood cell counts returned to a normal level
- No phlebotomy in the past 2 months
- Normal spleen size
- No thromboembolic events

As a reminder, these measures are essential to tracking how well your treatment of PV is working.

IMPORTANT SAFETY INFORMATION (continued)

Who should not take BESREMi?

Do not take BESREMi if you:

- Have or had severe mental health problems, especially depression, suicidal thoughts, or attempted suicide
- Have or had a serious or untreated autoimmune disease
- Are allergic to interferon or any ingredient in BESREMi (symptoms may include itching, swelling, trouble breathing, dizziness, or chest pain)
- Have certain types of liver disease
- Have had a transplant and take immune-suppressing medication

Before using BESREMi, tell your healthcare provider about all of your medical conditions, including if you have any of the following:

- A mental illness
- Type 1 diabetes
- Heart or bleeding problems

Please see additional Important Safety Information throughout and full [Prescribing Information](#), including [Boxed Warning](#) and [Medication Guide](#).

Discover real perspectives



“Before starting BESREMi, I was on hydroxyurea for eight years—it’s chemo... And I had to think about that every single day. Now, with BESREMi, I feel much less like a cancer patient.”

— Cheri, person with PV



“My counts are in control. I’m in control of this disease.”

— Steven, person with PV



See how people like you are taking charge of their PV treatment—and more.

IMPORTANT SAFETY INFORMATION (continued)

Before using BESREMi, tell your healthcare provider about all of your medical conditions, including if you have any of the following: (continued)

- Problems with your immune system
- Hepatitis B or HIV infection
- Kidney or liver problems
- Are pregnant or planning to become pregnant
 - BESREMi may harm your unborn baby. Use effective birth control during treatment and for at least 8 weeks after your last dose
 - BESREMi may affect your menstrual cycle and could stop your periods
 - Do not breastfeed while taking BESREMi

Please see additional Important Safety Information throughout and full [Prescribing Information](#), including [Boxed Warning](#) and [Medication Guide](#).



How to use BESREMI

BESREMI is an injectable at-home treatment that you administer once every 2 weeks.



- The recommended starting dosage of BESREMI is 100 micrograms (or 50 micrograms in people currently taking HU) every 2 weeks. Your doctor can tell you your prescribed dose
- Once you start BESREMI, your doctor will increase your prescribed dose until your blood cell counts are stable
- After maintaining stable blood levels for 1 year, your doctor may reduce your dosage to once every 4 weeks



Watch a
step-by-step
instructional video
on how to use
BESREMI.

You can reach out to your doctor or call PharmaEssentia SOURCE™ at 800-700-5053 for one-on-one **BESREMI** training.

IMPORTANT SAFETY INFORMATION (continued)

What are the possible side effects of BESREMI?

Serious side effects include:

- Low blood cell counts: taking BESREMI can lead to infections, anemia, or bleeding problems. Call your healthcare provider right away if you develop weakness and tiredness, bruising easily, nose bleeds often, fever, chills, burning and painful urination, urinating often, or coughing up yellow or pink mucus (phlegm)
- Serious allergic reactions: Get medical help right away if you get any of the following symptoms: skin rash or hives; itching; swelling of the face, eyes, lips, tongue, or throat; trouble breathing; chest pain; or feeling faint
- Eye problems: BESREMI can cause severe eye problems with your retinas that can lead to vision loss or blindness. You should have an eye exam before and during treatment with BESREMI if you have diabetes or high blood pressure and also have retinal problems
- Liver problems: BESREMI can cause increases in liver enzymes and liver damage. Your healthcare provider should do blood tests to monitor your liver enzymes and liver function before you start and during treatment with BESREMI



Practical tips as you start BESREMi

Every person may have a different experience taking BESREMi. Because BESREMi is a biologic interferon, it triggers your immune system to start working, which may make you more likely to experience some side effects. In clinical trials for BESREMi, some of these side effects lessened over time.

Here are some suggestions for how to manage the most common side effects of BESREMi:



Flu-like symptoms (such as tiredness, weakness, fever, chills, muscle aches, and joint pain)

For many patients, these symptoms diminish within 12 hours after taking BESREMi.

- Start injections on a day and time that is convenient for your schedule
- **Talk with your doctor about taking acetaminophen to help reduce fever symptoms or ibuprofen to help reduce aches and pains**
- Alternate periods of rest and activity
- Stay hydrated



Itching

- Avoid hot showers
- Use unscented body products
- Ask your doctor about taking an antihistamine



Sore throat

- Drink hot tea or hot soup
- Try sucking on lozenges, hard candies, or ice chips
- Gargle salt water



Injection site reactions

- Apply ice to the injection site
- Rotate your injection site

“I did experience influenza-like side effects at first... but I’m not experiencing any now. I really encourage you to reach out to your doctor to gather information about managing side effects.”

— Susan, person with PV

Remember, it may take a few months to see comprehensive results with BESREMi, but that’s because it targets PV at the source. By addressing the cause of PV in the bone marrow, BESREMi delivers long-term PV control.

Patients who experienced comprehensive disease control often saw results in about **7.8 months**. At **10 weeks** on BESREMi, about **27% of patients** achieved comprehensive disease control.





Support for your first prescription and beyond

It's important to understand what to expect before you start BESREMi. There are certain steps that need to be completed before you receive your treatment, and it's normal for these steps to take some time.

After your doctor writes you a prescription for BESREMi, your health plan will follow a review process to determine your coverage before you can receive it.

Once your coverage is determined, your pharmacy will work with you to deliver your prescription.



Tip:

If your pharmacy calls you, save the number in your phone so you know who's calling.

PharmaEssentia SOURCE™ offers personalized support throughout your BESREMi journey

Once you are enrolled in PharmaEssentia SOURCE, one of our Case Managers will assist you with starting and staying on BESREMi.

- Help you find resources for financial support
- Explain what you might expect during treatment
- Teach you how to properly self-administer BESREMi
- Answer any questions you may have



Enroll now at PharmaEssentiaSOURCE.com or call 800-700-5053.

IMPORTANT SAFETY INFORMATION (continued)

Serious side effects include: (continued)

- **Kidney problems:** Your healthcare provider will do blood tests to check your kidney function before starting and during treatment with BESREMi. Tell your healthcare provider right away if you develop any symptoms of a kidney problem, including: changes in the amount or color of your urine, swelling in your ankles, blood in your urine, or loss of appetite

Please see additional Important Safety Information throughout and full [Prescribing Information](#), including [Boxed Warning](#) and [Medication Guide](#).



Stay informed with a glossary of PV terms

Get to know some key words you may hear or see when learning about PV and BESREMi.

Blood cells

Types of cells that support various functions in the body. Created in the bone marrow, they begin as stem cells and mature into red blood cells, white blood cells, and platelets.

Bone marrow

The soft, spongy tissue inside bones that makes blood cells.

Cardiovascular events

Incidents that can damage the heart and blood vessels, such as a heart attack or stroke.

Chemotherapy

A treatment that uses drugs to kill cancer cells or slow their growth.

Complete hematologic response (CHR)

When all blood cell counts have returned to normal levels, typically after treatment for a blood-related condition.

Comprehensive disease control (CDC)

When all blood cell counts and spleen size have returned to normal and there is an absence of thromboembolic events, typically after treatment for a blood-related condition.

Efficacy

The ability of a treatment to produce the desired result.

Hydroxyurea (HU)

A type of chemotherapy that reduces the production of abnormal blood cells and lowers the risk of blood clots.

Immunotherapy

A treatment that uses certain parts of the body's immune system to fight disease.

Interferon

A protein that helps control cell growth and regulate the immune system.

JAK2

A gene that helps make a protein that controls cell growth, especially blood cells.

JAK2 mutation

A change in the *JAK2* gene that can lead to blood disorders where the blood makes too many blood cells.

Myeloproliferative neoplasms (MPNs)

Blood cancers in which the bone marrow makes too many blood cells.

Phlebotomy (PHL)

A procedure of drawing blood to reduce excess blood cells and decrease blood volume.

Platelets

Small cell fragments that help form clots and stop bleeding.

Red blood cells (RBC)

A common type of blood cell that delivers oxygen to the rest of the body.

Stem cells

Cells in the body that can develop into different types of cells.

Thrombotic events

Situations where blood clots form in a blood vessel or the heart, which can block blood flow.

Thromboembolic events

Situations where a blood clot breaks loose and travels to another part of the body, causing a blockage.

White blood cells (WBC)

A type of blood cell that helps the body fight infections and disease.





BESREMi Can Help You Take Control of What Counts

Get the latest updates and explore
downloadable resources at BESREMi.com.

IMPORTANT SAFETY INFORMATION (continued)

Serious side effects include: (continued)

- Tooth and gum problems: BESREMi can cause tooth loss and/or dry mouth. It is important for you to brush your teeth well, two times each day and have regular dental examinations during treatment with BESREMi
- Skin reactions: BESREMi may cause reaction such as rash, itching, and hair loss
- Increased triglycerides: You may require blood tests to monitor levels

The most common side effects of BESREMi include:

- Flu-like symptoms, including tiredness, weakness, fever, chills, muscle aches, and joint pain
- Itching
- Sore throat

These are not all of the possible side effects of BESREMi.

Call your doctor for medical advice about side effects. You may report side effects to PharmaEssentia at **1-800-999-2449** or FDA at **1-800-FDA-1088**.

Reference: 1. Referenced with permission from the NCCN Clinical Practice Guidelines in Oncology (NCCN Guidelines[®]) for Myeloproliferative Neoplasms V.1.2025. © National Comprehensive Cancer Network, Inc. 2025. All rights reserved. Accessed February 25, 2025. To view the most recent and complete version of the guidelines, go online to NCCN.org. NCCN makes no warranties of any kind whatsoever regarding their content, use or application and disclaims any responsibility for their application or use in any way.

Please see additional Important Safety Information throughout and full [Prescribing Information](#), including [Boxed Warning](#) and [Medication Guide](#).

PharmaEssentia™

© 2025 PharmaEssentia Corporation. All rights reserved.

BESREMi, the BESREMi logo, and PharmaEssentia are registered trademarks of PharmaEssentia Corporation, and the PharmaEssentia logo, PharmaEssentia SOURCE, and the PharmaEssentia SOURCE logo are trademarks of PharmaEssentia Corporation.

US-BSRM-2500072 (v1.0) 06/2025

